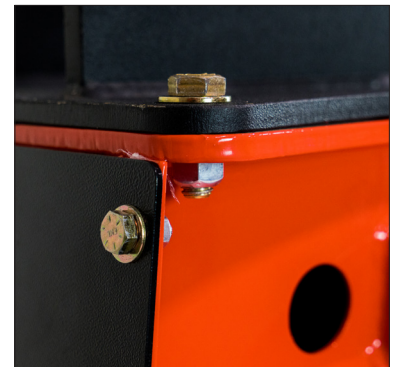


EX-30M/30/40 **ETERRA**

Excavator Flail Mowers



The EX series of excavator flail mowers are built for clearing grass and brush up 6" from roadsides, ditches, and other hard to reach areas. Three size options allow for fitment on nearly any machine size, ensuring you get the most out of your machine's hydraulics. Designed and built entirely in the USA using high strength steel, these mowers are built to last.



	EX-30M	EX-30	EX-40
Weight	346 lbs.	466 lbs.	616 lbs.
Rec. Machine Flow	8-26 GPM	8-26 GPM	15-50 GPM
Max Pressure	3,500 PSI	3,500 PSI	3,500 PSI
Motor	Permco Gear	Permco Gear	Permco Gear
Drive Shaft Material	4140 HT Steel	4140 HT Steel	4140 HT Steel
Blade Type	1 lb Y-Knife	2 lb Y-Knife	2 lb Y-Knife
Blade Count	16	20	20
Blade Life Exp.	500 hr	500 hr	500 hr
Cut Capacity	2"	6"	6"
Cut Width	30"	30"	40"